



會信浸中

Baptist Mid-Missions

社會服務年報
Social Services Annual Report
2016-2017



目錄

Contents

執行董事報告 Managing Director's Report	1
蝴蝶灣浸信會長者中心 Butterfly Bay Baptist Church Elderly Centre	2
建生浸信會白普理幼兒園 Kin Sang Baptist Church Bradbury Pre-School	8
嘉福浸信會幼兒園 Ka Fuk Baptist Church Pre-School	12
2016-2017 核數報告 Auditor's Report, 2016-2017	17
鳴謝 Acknowledgement	21

執行董事報告

Managing Director's Report

鮑伯勤牧師

Pastor Richard Baucum



我多年來以美中浸信會（香港）執行董事的身份，跟大家分享一些想法，實為榮幸。今年我所思想的，是兩段很重要的聖經經文。

第一段經文在詩篇 90 篇。它提醒我們各人，我們都會朽壞，惟有神是永恆的。它既鼓舞人，也激勵人。鼓舞人之處，在於我們知道，我們在世活着，並不孤單；我們做主呼召我們去做的愛心之工，也不孤單。

激勵人之處，在於經文後段。摩西向神呼求：「求你指教我們怎樣數算自己的日子，好叫我們得著智慧的心」（詩篇 90:12）。這經文的呼喚，要我們都記住，虛耗一生抑或投資一生，在乎我們怎樣選擇。

每年在周年晚宴聚首一堂，迎接新一年的事工時，我環顧四周，看見愈來愈多同工，不論男女，選擇投放生命來事奉這位永生之神。你們堅定不移地服事長者、兒童和他們的家庭，我看著，喜樂湧上心頭！你們的服事，肯定更使那位一天復一天察看你的神，心中高興歡喜。

第二段經文是摩西之話的一種後續。寫下這話的是使徒保羅：「你們要謹慎行事，不要像愚昧人，當像智慧人。要愛惜光陰，因為現今的世代邪惡。不要作糊塗人，要明白主的旨意如何」（以弗所書 5:17）。

這樣看來，無論何時，無論我們住在哪裏，神都呼喚我們細心思想，祂給我們一生的時光是有限的。這話激勵我們，憑智慧善用時間，做高舉祂的事，促進祂在眾人生命中的計劃和目的。

我想藉此機會，感謝在我們的服務單位或教會中服事的每一位同工。你選擇了智慧的道路，在有限的時間和空間中把握機會，為永恆的緣故做不一樣的的事業。

Each year and for many years it has been my great honor to share some thoughts as Director of Baptist Mid-Missions, Hong Kong. This year my thoughts turn to two important passages of Scripture.

The first is found in Psalm 90. It is a reminder to all of us that while we are mortal, our God is eternal. That is both a great encouragement as well as incentive. It encourages us because we know that we are not alone in this world, nor are we alone in the labor of love He has called us to.

The incentive comes when later in the Psalm Moses cries out to God saying, So teach us to number our days that we may apply our hearts unto wisdom (Psalm 90:12). It is a call to all of us to remember that we have a choice to waste our lives or invest our lives.

Each year as we gather to celebrate another year of ministry at our annual dinner, I look out over an ever-growing number of men and women who have chosen to invest their lives in service to this eternal God. What joy comes to my heart as I behold your steadfast service to children, the elderly and their families! How much more must you gladden the heart of God who watches over you day by day.

The second passage is something of a follow-up to the words of Moses. This time it is the Apostle Paul who writes, See then that ye walk circumspectly, not as fools, but as wise, Redeeming the time, because the days are evil. Wherefore be ye not unwise, but understanding what the will of the Lord is (Ephesians 5:15-17).

It seems that God calls us, no matter when or where we live, to consider that He has given to us a limited amount of time on this earth. The challenge is to use it wisely in ways that exalt Him and further His plan and purposes for all people.

May I simply take this opportunity to thank each of you from our service units and local churches for choosing the way of wisdom by making the most of your limited opportunity in time and space to make a difference for all eternity.

蝴蝶灣浸信會長者中心

Butterfly Bay Baptist Church Elderly Centre

Introduction

Thanks to God! The Centre has been serving the elders in Tuen Mun for more than 31 years. The Centre has been upgraded from a Social Centre for the Elderly (SE) to a Neighbourhood Elderly Centre (NEC) for more than two years.

Baptist Mid-Missions, in conjunction with Butterfly Bay Baptist Church, has formed a Christian staff dedicated to identifying and responding to the spiritual, social, emotional and physical needs of the elderly in the community. The staff is committed to creating open communications with the elderly and their family members so that the often complex needs of the elderly are not overlooked or neglected.

前言

感謝神！中心已服務屯門區長者逾 31 年；中心由長者活動中心提升為長者鄰舍中心已經兩年多。

中心的基督徒職員團隊，是透過美中浸信會與蝴蝶灣浸信會協作組成的。我們這支基督徒職員團隊，致力於識別和回應區內長者在心靈、社交、情緒及身體上的需要。職員全心全意與長者和其家人坦誠溝通，留意和照顧長者各種常見的複雜需要。



本年度工作重點

感謝神！祂帶領 2 位優秀的新同工加入我們的大家庭，本年度中心增聘 1 名行政助理和 1 名活動助理。

感謝神！讓中心擁有穩定的人手，中心差不多 5 年沒有職員離職，中心亦順利通過社會福利署去年 10 月進行的「服務表現評估」。

服務小統計

中心本年度會員人數為 1,102 名，全年會員平均人數為 1,051 名，舊會員續會率達 87%；全年偶到服務 33,717 人次，每天平均 124 長者人次使用中心服務。

中心本年度提供小組、活動和計劃共 292 個；中心非常關注長者在情緒、經濟、住屋及家庭各方面的需要，為有需要的長者提供個案輔導 152 個及隱閉或有需要照顧長者個案 49 個。

另一方面，中心積極推動長者參與義工服務，例如協助中心日常服務，以及定期探訪區內獨居和體弱長者。本年度 56 名義工獲頒嘉許證書。

中心亦非常重視長者心靈上的需要。長者可以透過開心組（長者團契）及主日崇拜接觸福音，認識耶穌。



Foci of the Year

Thanks to God! He led two outstanding staff members to our Centre. We hired one Administrative Assistant and one Program Assistant this year.

Thanks to God! The Centre's work force has been steady. No staff member resigned in the past 5 years. Also, the Centre passed the "Service Quality Assessment" conducted by the Social Welfare Department in October last year.

Some Service Statistics

Over the year, the annual membership count was 1,102. The average number of members registered was 1,051, and the membership renewal rate was 87%. The annual attendance for drop-in services was 33,717, with daily average 124.

In this year, we organized 292 groups, activities and programs. We paid special attention to elders' emotional, financial, accommodation and family needs. We conducted 152 counselling cases and 49 hidden or needy elderly case.

We were also enthusiastic in encouraging elders to participate in voluntary work. For instance, we arranged elders to assist in the Centre's daily services. We led them to do regular visits to those who lived alone or were physically weak. By this year, 56 elderly volunteers were awarded certificates of commendation.

We gave serious attention to elders' spiritual needs. They would join elders' fellowship meeting and attend Sunday Worship Service to get in touch with the gospel and to know Jesus Christ.





增值服務

中心本年度家會集會 72 次，共 3,473 人出席，平均每次 48 人出席。為了回應長者的不同需要，中心為長者提供多項增值服務，例如電腦、健康及運動器材、書報、理髮和卡拉 OK 等。本年度共 16,283 人次使用增值服務。

總結及展望來年

中心致力在一個基督教環境下，提供鄰舍層面的優質長者社區支援服務，以實踐基督關愛和聖經真理。因此，我們透過服務長者，讓長者在各服務中有機會認識基督的救恩，促使長者過著健康、受尊重及有尊嚴的社區生活。我們持守美中浸信會成立的使命來提供一系列的全面服務，以滿足長者身、心、靈的需要。

展望將來，中心的首要工作是根據本會的理念、社會福利署及其他資助機構的要求，提供滿足服務使用者需要的服務。我們將會不斷檢討和聽取意見，提升中心服務的質和量，以滿足服務使用者的需要。

最後，在此衷心感謝同工和義工本年度的努力和付出，讓中心可以順利由長者活動中心提升為長者鄰舍中心，為區內長者提供多元化的優質社區支援服務。



Value-Added Service

Over the year, a total of 72 general meetings were conducted and 3,473 (48 on average per meeting) attended. In response to various needs of the elders, we provided value-added services such as IT equipment, physical exercise equipment, newspaper and magazine, hair cutting and Karaoke. The annual count for our value-added service was 16,283.

Conclusion and Prospect

The Centre is committed to providing quality community support services at the neighborhood level in a Christian environment. We seek to practice the love of Christ and to fulfill the truth of the Bible. Therefore, we minister to the elders, giving them an opportunity to know the salvation from Christ. We believe this will enable the elders to lead a healthy, respectful and dignified life and to enhance their positive and contributing role in the community. We are committed to providing a range of comprehensive services which cater to the psycho-social and genuine spiritual needs of the elders in accordance with the founding vision of Baptist Mid-Missions.

In the future, the primary task is to provide services that are in line with our vision and mission and comply with requirements imposed by the Social Welfare Department and other sponsoring organizations. In order to meet service users' needs, we will continually conduct evaluation and seek opinions so as to enhance the services.

Finally, we would like to sincerely thank the staff and the volunteers for their labour and devotion over the year. They contributed to the Centre's successful upgrade from SE to NEC, as well as to its provision of a wide range of quality community support services for the local elders.



2016-2017 年度服務統計 2016-2017 Service Statistics

1. 會員 Membership

年度結束時會員人數 Number of members at the end of the year	1,102
平均會員人數 Average number of members registered	1,051
會員續會百分比 Membership renewal rate	87%

2. 偶到服務 Centre Attendance

偶到服務人次 Total attendance	33,717
開放節數 Total number of sessions opened	546
平均每節偶到服務人次 Average attendance per session	62

3. 家會 Elderly Regular Meetings

出席人數 Total attendance	3,473
集會次數 Total number of meetings	72
每次集會平均出席人數 Average attendance per meeting	48

4. 小組、活動及計劃 Groups, Activities and Programs

	小組、活動及計劃數目 No. of groups, activities and programs
推廣健康及積極晚年訊息 Promotion on healthy and active ageing, physical and psycho-social well-being of elderly persons	157
達致長者的教育及發展性需要 Meet the educational and developmental needs of elderly persons	
達致長者的社交及康樂性方面需要 Meet the social and recreational needs of elderly persons	
有關義工招募、發展及服務 Volunteer recruitment, development and services	91
為護老者提供的支援性服務 Provide carer support services including mutual support groups	44
總數 Total	292

5. 護老者 Carers

首次接受服務的護老者人數 Number of carers newly served	156
--	-----

6. 義工 Volunteers

義工（60 歲以下）人數 Number of volunteers (aged below 60)	19
義工（60 歲或以上）人數 Number of volunteers (aged 60 or above)	114
總數 Total	133

7. 個案 Cases

承前活躍個案數目 Number of active case brought forward from last year	82
新開個案數目 Number of cases opened	70
恢復活躍個案數目 Number of case reactivated	0
完結個案數目 Number of cases closed	36
期末活躍個案數目 Number of active cases as at the end of this year	116

8. 隱閉長者 Hidden Elderly

承前活躍個案數目 Number of active case brought forward from last year	40
新開個案數目 Number of cases opened	9
恢復活躍個案數目 Number of case reactivated	0
完結個案數目 Number of cases closed	12
期末活躍個案數目 Number of active cases as at the end of this year	37



9. 安老服務統一評估 MDS-HC Assessments

安老服務統一評估數目 Number of MDS-HC assessments conducted	88
---	----

10. 地區持份者活動：服務推廣 / 建立戰略夥伴關係

Activities of Building Up Rapport and/or Establishing Strategic Partnership with Local Stakeholders for Service Promotion

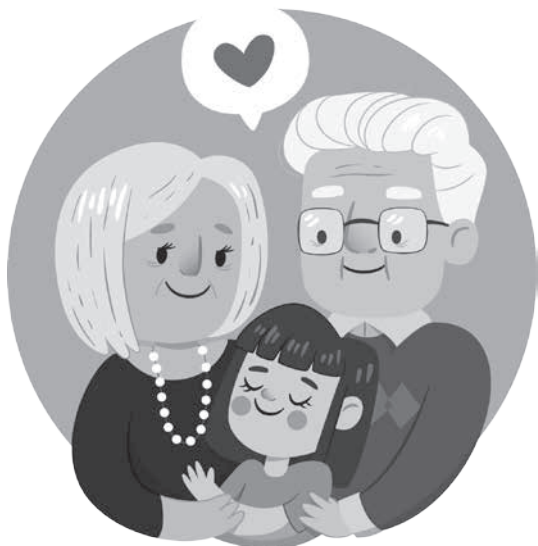
活動數目 Number of Activities	19
---------------------------	----

11. 增值服務 Value-Added Services

使用運動器材 Using physical exercise equipment	3,459
使用資訊科技器材 Using IT equipment	2,501
閱讀書報 Reading newspapers & magazine	1,755
玩魔力橋／奕棋 Playing Rummikub / Chess	7,346
卡拉 OK Karaoke	166
康復用具借用 Rehabilitation tool borrowing	165
優惠購物 Preferential purchasing	891
總數 Total	16,283

12. 申訴 Complaints

申訴數目 Number of complaints	0
---------------------------	---



蝴蝶灣浸信會長者中心 Butterfly Bay Baptist Church Elderly Centre

地址： 新界屯門蝴蝶邨
蝴蝶灣社區中心地下
Address: G/F, Butterfly Bay Community Centre,
Butterfly Estate, Tuen Mun, NT
電話 Tel.: 2468 1109

建生浸信會白普理幼兒園



幼兒園概況

幼兒園自一九九零年開辦至今已踏入第二十七年，全園設有四班，分別為二至六歲兒童提供學前教育。目前全園學生共一百二十名，老師有十五名，一名專業普通話教師、一名外籍英語老師、一名體適能導師、兩名校務文員、一名會計文員、五名職工、與及校長共二十七人。此外，本園開辦共融服務，為十二名有輕度弱能或學習障礙的兒童提供融合教育，並設有暫託服務，每天提供三個名額予有需要的兒童，以及提供早上及傍晚的延長時間服務，為有特別需要照顧的兒童提供暫時的照顧服務，以協助需要處理突發事情的家長。

辦學宗旨

本園以基督愛人之精神培育兒童，奠下良好的基礎，讓孩子從小在愛中學習及成長。

在課程方面，本園以基督的愛關懷和培育兒童的身心靈，並配合兒童的發展階段，使他們在體能與健康、認知和語言、情意和群性、美感及靈育等各方面得到全面均衡的發展。我們致力啟發學生潛能，培養他們發展自我管理和自主學習的能力，繼而建立積極及愉快的人生觀。

本園教職員互相協力，發揮團隊精神，建立和諧的工作環境，並與屯門區的家庭及社區緊密合作，共同培育學生健康快樂成長。



Kin Sang Baptist Church Bradbury Pre-School

Profile

Established in 1990, the School turned 27. Four classes are available to provide pre-primary education for children aged 2 to 6. Currently, the number of students is 120. The School is staffed by 27: 15 teachers, one Putonghua teacher, one native English teacher, one physical fitness coach, 2 clerks, one accounting clerk, 5 workmen, and the principal. The School offers Integrated Program services (12 places) for children who are mildly mentally handicapped or have learning difficulties. The School also runs Occasional Child Care services (3 places per day) and Extended Hours services (morning and evening sessions) for parents who need to take care of urgent matters.



Objectives

With the spirit of Christ, the School establishes good foundation in the children so that they would learn and grow in love. It cares for and nurtures the children's whole person with the love of Christ.

By means of a curriculum that fits children's development, the School fosters a balanced development in children's physical, cognitive, social, aesthetic and spiritual aspects. We are committed to inspire students' potential, train up their ability of self-care and self-learning, and establish an active and pleasant outlook on life.

We join forces in building up a harmonious, mutual-help working environment so that teachers bring talents and team spirit into full play. We closely cooperate with families and the community to cultivate healthy and pleasant growth in children.

Looking Back

We are convinced that children of all levels have the opportunity to receive quality early childhood education. Bearing this aim in mind, we improved the curriculum, the school facilities and the supporting services in the past year.

回顧過去一年

本園堅守著一個信念，無論是來自任何階層的幼兒，都有機會接受優質的幼兒教育。過去一年，我們從不同方向去改善課程、環境及支援服務，以致我們能為兒童提供優質的幼兒教育服務。

(一) 積極推動環保，融入校本課程

本校從環境建設、行政管理、課程設計及環保活動等各方面，培育幼兒能與大自然共處的生活態度。本校參與香港專業教育學院主辦的「綠路童心」計劃，教導幼兒實踐「惜物、減廢」，從小培養幼兒的環保意識。本校也參加衛生署控煙辦公室資助保良局設計，為期兩年的「無煙有 LIKE」幼稚園預防吸煙教育計劃，讓學童了解無煙訊息，繼而正面影響家庭成員。



(1) We Promoted Environment Protection by Incorporating it into the School-based Curriculum.

The School cultivated in children's hearts an attitude of living in harmony with the environment. It joined the Kids' Greenway sponsored by the HK Institute of Vocational Education in order to teach children to "use less, waste less". To spread the smoke-free message and positively influence the families, the School participated in a 2-year smoke-free campaign subsidized by the Department of Health and schemed by Po Leung Kuk.

(2) We Built Up Dignity in the Children by Integrating Moral Education and Christian Faith.

By bringing about the integration in the school-based curriculum, the School led the children to understand the meaning of "life" and to manifest love. The School joined the "Positive Character Education Campus" and adapted the "6A's of Positive Parenting" to teach the children to build up positive characters and manners.



(二) 結合德育與信仰，培養兒童高尚情操

本校把德育與信仰結合於校本的課程，讓幼兒明白「生命」的意義，培養幼兒愛己愛人的情操。並參與香港有品運動策劃的「有品校園」計劃，根據「6A 品格教育」，讓幼兒學習建立良好品格，以及待人接物的態度。

展望未來

本校訂定以下的關注事項為 2017-2018 學年的發展方向：

(一) 完善校本課程，促進幼兒語文發展

本年度由學校課程發展小組策劃全方位學習活動，鼓勵幼兒從大自然的環境探索中學習，配合校本語文課程特色，並透過故事、音樂、體能、美藝等多元化學習元素，融合於各項課堂活動，引發幼兒的學習興趣及語言發展潛能，發展幼兒的語文能力。此外，專業導師亦會透過活動教學模式教授英語及普通話，誘發幼兒兩文三語的學習興趣，加強表達能力。





(二) 加強家校合作，支援家長需要

為進一步關顧不同學習需要的幼兒，學校於本年度將繼續定期安排社會福利署到校學前康復服務「匡智匡晴計劃」，為有特別學習需要的幼兒提供學習支援。除此之外，本校透過不同的家長親職健康及教育講座、親子遊戲日、親子旅行等，創設一個交流平台，喚起家長重視教育子女的共識，促進家長對學校教育之認同及支持。

(三) 營造正向校園文化，鞏固幼兒品格教育

老師透過課堂遊戲活動，教導學生恰當地運用自己的「性格強項」，建立積極正面的生活態度，並培養兒童建立勇敢及堅毅的品格，學習面對及接受挑戰和挫敗。為鞏固幼兒品格教育，學校更著意將「關愛」延伸至校園以外，營造和諧共處的家庭及社區文化，令兒童在待人接物上有積極的價值方向。



結語

本園遵循美中浸信會的辦學理念，以基督的愛為基礎，為香港新一代提供高質素的幼兒教育，培養幼兒成為自信、自律、自愛的公民，也希望藉幼兒教育見證基督的大愛，以達至榮神益人。我們相信任何的成功均需要凝聚各方的資源與力量。學生要學習與人合作，彼此尊重，共同創造成就。我們明白教師也要結合家長、專業人士及社區的力量，才能提昇教學效能，豐富學生的學習經驗。但願我們能匯聚神與人的力量，培育「愛神愛人」、「樂善勇敢」、「溫柔謙遜」的下一代。

Looking Forward

The School's work and development for the year 2017–2018 tie with the following matters of concern:

(1) Fostering Language Development by Perfecting the School-based Curriculum

The all-rounded learning activities planned by the School's curriculum development group will encourage children to learn in the nature. Stories, music pieces, physical fitness and fine arts will be incorporated into the classes to stimulate children's interest and develop their potential in language development. Professional instructors will teach English and Putonghua through activities in order to arouse children's interest in these languages and boost their communication ability.

(2) Strengthening Family-Teacher Cooperation and Supporting Parents' Needs

To care for children with various learning needs, the School will continue to make use of SWD's on-site pre-primary services from "Sunshine Project", operated by Hong Chi Association. In addition, parent talks, parent-child fun day and picnic will serve as ways for the two sides to exchange views. Parents will then achieve a common view with the School in parenting, and support the School's education.

(3) Consolidating Character Development by Cultivating Positive Culture in School

Children will be taught to build up strengths in their personalities, by means of games in lessons, so that they would become optimistic, brave and enduring. They would also learn to face challenges and failures that come to their lives. To solidify character development, the School will extend its "lovingly care" to the families and the community. Children will then establish a good way of getting along with people around them.

Conclusion

Following the philosophy of education of Baptist Mid-Missions, the School commits to provide quality childhood education for HK's new generation with the basis of love of Christ. The School aims to nurture children with self-confidence, self-discipline and self-respect. It hopes that the cause of childhood education would testify the love of Christ, glorify God and benefit the people. We believe success rests on coherence of all resources and strength. Children need to learn to cooperate with and respect for one another. We realize that children gain learning experience only when teachers link up strengths from parents, professionals and the community. May we join hands with God in rearing a loving, kind, brave, gentle and humble generation.

2016-2017 年度統計 2016-2017 Statistics

1. 活動統計 Activity Statistics

活動名稱 Name of Activity	次數 No. of Times	參與人次 No. of Participants		
		兒童 (Students)	工作人員 (Workers)	家長 (Parents)
生日會 Birthday Party	6	720	90	0
參觀 Visitation	12	696	95	326
節日慶祝會 Ceremonial Party	4	480	72	230
學校旅行 School Picnic	1	92	17	176
家長會 Parental Meeting	1	102	16	189
家長講座 Parental Talk	4	53	35	112
幼兒講座 Children Talk	4	273	24	0
兼收組活動 Activities for Integrated Programme	2	20	6	34
親子體能競技 Parent-Child Physical Activity	1	75	16	156
「開心果日」校園派對 "Fruit Day" School Party	1	120	11	0
新生家長日 New Student Orientation	1	39	24	58
觀課週 Class Visit	4	120	12	68
公開表演 Public Performance	3	70	15	45
寄聖誕咭 Posting Christmas Card	1	90	12	0
畢業典禮 Graduation Ceremony	1	120	24	302
畢業聚餐 Graduation Dinner Gathering	1	31	11	55

2. 學生年齡分佈 Age Distribution of Students

班別 Class	年齡 Age	學生人數 No. of Students
N	2-3	30
K1	3-4	21
K2	4-5	33
K3	5-6	34

建生浸信會白普理幼兒園 Kin Sang Baptist Church Bradbury Pre-School

地址： 新界屯門建生邨泰生樓地下
Address: G/F, Tai Sang House,
Kin Sang Estate, Tuen Mun, NT
電話 Tel.: 2455 9803

嘉福浸信會幼兒園

前言

1996年7月1日，我帶著一個開荒者的心情，用了兩個月的時間籌辦嘉福浸信會幼兒園。這時候上帝的話語臨到我的腦海中：「若不是耶和華建造房屋，建造的人就枉然勞力；若不是耶和華看守城池，看守的人就枉然儆醒。」（詩篇 127:1）

這是難得和寶貴的經歷。把最好的教育給孩子，是我對孩子的心志；讓教師發揮高效能的教學，是我對教師的承擔；讓家長安心地將孩子交給幼兒園，是我對家長的承諾；辦好一間幼兒園榮耀上帝，是我終身的使命。

時間過得很快，今年幼兒園踏入第二十一個年頭。現在讓我向大家匯報一下過去一年的成果。



2016-2017 年度教學重點

1. **實施及優化多姿多采的數學活動**，持續提升幼兒對數學的興趣和能力。我們設計多元化的數學教材及有趣的數學遊戲日活動，為幼兒營造豐富的數學環境。我們運用數學兒歌、數學視覺教材，購置數學圖畫故事書讓幼兒取閱，並安排教師培訓，改進教師的數學教學策略，還為家長安排「玩轉數學、開啟快樂」講座，提升家長對數學的認識和應用。
2. **豐富幼兒的群體生活經驗**，透過設計遊戲活動，發展幼兒的執行能力，促進幼兒自我情緒管理和人際互動的能力。我們透過高廣度教學模式，提升幼兒在執行功能中的規劃及組織能力，並設計不同的群性遊戲，如體能遊戲、音樂遊戲、混齡遊戲，擴闊幼兒的群體生活經驗。



Ka Fuk Baptist Church Pre-School

Foreword

As a pioneer, for two months since July 1, 1996 I planned Ka Fuk Baptist Church Pre-School. At that time, a verse from God came to my mind: "Except the LORD build the house, they labour in vain that build it: except the LORD keep the city, the watchman waketh but in vain" (Psalm 127:1).

This is a rare but precious experience for me. My life-long commitment is to offer the best education to children, allow teachers to perform highly effective teaching, gain parents' trust in sending their children to the School, and manage the School that glorifies God.

Time flies. The School is entering its twenty-first year. Let me report the fruits that we bore in the past year.

Focal Points in Teaching for the Year 2016-2017

1. We carried out various mathematical activities in order to increase children's interest and ability in mathematics. We designed diversified teaching tools and arranged fun activities on Mathematics Day to create a rich mathematical environment. We used math songs and visual tools. We purchased illustrated story books and encouraged children to read. We provided in-service training for teachers to improve their math teaching strategies and arranged a parent workshop named "Fun Math" to promote parents' knowledge and application in mathematics.



2. We enriched children's social experience by means of designed games. We aimed to develop children's ability in implementing tasks, controlling emotions and interacting with people. Through High Scope teaching model, we promoted children's ability in planning and organization. We designed group activities such as physical activities, musical activities and mixed-age activities to extend children's social experience.



3. **培育幼兒的體育素養**，促進大小肌肉發展，讓幼兒掌握基礎動作技能，從小養成積極參與運動的興趣及習慣，為終身體育素養奠下良好的基礎。我們與香港中文大學教育學院體育運動科學系共同推動「幼兒健體樂、家長齊參與」家校合作計劃。我們進行四項基礎能力評估、家長問卷調查、教師基礎活動教學培訓、家長健體樂分享會及親子同樂日活動等，過程中無論幼兒、家長和老師都一起從遊戲中學習，體驗體能活動的樂趣，促進親子和師生的溝通。

獻上感恩

感謝主！幼兒園有一個穩定的教學團隊，有一群忠心、活潑、有幹勁的老師，她們積極投入教學，使幼兒得著豐富而多元化的建構式學習，為未來奠定良好的學習基礎，幼兒又從她們身上感受天父的愛。我們會繼續努力，忠於所托。願將一切榮耀歸給上帝！



2017-2018 年度計劃

宗旨

以基督愛人的精神，實施全人教育，為學前兒童提供優質教育和服務。

使命

1. 培育兒童在靈性、道德、智力、體能、社交、情緒、語言各方面全面而平衡的發展。

3. We nurtured children in physical fitness, extended their big- and small-muscle development so that they would master basic physical skills and develop interest and habit in doing physical exercise, which would be a good foundation of life-long physical fitness. We worked with the Department of Sports Science and Physical Education, CUHK, to carry out a parent-school physical fitness project: basic skills evaluation, parental survey, teachers' training in basic activities, parents' sharing meetings and happy gala. Children, parents and teachers learned through playing and experienced the joy of physical fitness. Communication among them was enhanced.



Thanksgiving

Praise the Lord that He has given the pre-school a stable, faithful, vibrant and energetic teacher team. Teachers actively involved in teaching, and offered rich and multi-dimensional learning experience for the children, which was a solid foundation for their future. Children could feel the love of the Heavenly Father from the teachers. We will continue to work hard and be faithful to what He entrusts us. To God be all the glory!

Plan for the Year 2017-2018

Objective

Operating with the love of Christ, the School implements a holistic education and provides quality education and service for pre-school children.

Missions

1. Developing children in well-rounded and balanced development in spiritual, moral, intellectual, physical, social, emotional and language aspects.
2. Leading children to know Jesus Christ in a loving environment, practice Christian love, care for others and serve the community.
3. Cultivating children's interest in learning and independent thinking, so that they will be happy, broad-minded, loving and self-confident.

2. 讓兒童在愛的環境中認識耶穌，實踐基督徒的愛心、關懷別人及社會。
3. 培養兒童對學習產生興趣及獨立思考，使他們成為活潑、開朗、仁愛及自信的孩子。

理念

實施設計活動教學，引導幼兒多角度探究事物，主動學習、尋找答案。透過親身體驗、小組討論、資料搜集、訪問、記錄、匯報、展覽、檢討等學習方式，提升幼兒社交能力、語言溝通、數理邏輯思考、科學思維、解難能力等多方面的發展。



2017-2018 新學年新目標

新學年開課前，校長與教師舉行退修會，探討新學年的方向。我們確立了三個新目標：

1. **實施品德教育**，建立幼兒正確價值觀，促進幼兒良好的生活和學習態度，讓幼兒認識自己的能力和長處，建立自信心和成就感，培養幼兒自律，學習對自己的行為和情緒負責任。



2. **推行戲劇教育**，促進幼兒情感表達、社交發展、創意思維及多角度思考等能力。在課堂中加入戲劇遊戲、戲劇習式、角色探演及表徵遊戲等戲劇元素，幼兒代入角色情景，了解戲劇衝突，提出解決方法，為故事角色解決困難，提升幼兒創作戲劇的能力。



Concepts

The School implements Project Approach Model to lead children to investigate matters from multiple dimensions, learn proactively and find solutions. Through learning methods such as personal experience, small group discussion, information gathering, interview, recording, report, display and evaluation, we aim to promote children's ability in social interaction, communication, analytical thinking, scientific concept and problem solving.

Objectives for the School Year 2017-2018

Before starting the new year, the staff attended a retreat to explore new dimensions. We set three objectives for the new year:

1. **Fostering Moral Education.** We aim to establish proper morals in children and promote good attitude in living and learning. They would know their strength, and build a sense of self-confidence and achievement. They would also learn to control their temper and be responsible for their behaviors and emotions.
2. **Implementing drama education in classroom.** We aim to promote children in emotional expressions, social development, creative thinking and multi-dimensional thinking. Drama games, drama pattern, role playing and visual games will be incorporated in the lessons. Children would take the role in the drama, understand the conflicts and seek solutions for them. This would also develop creativeness of the children.
3. **Practicing and optimizing physical fitness activities.** We aim to promote children's whole person development. Children would master basic physical skills and concepts by exploration, experience, practice and teachers' guidance. They would then develop interest and ability in doing physical exercise when they are young.

3. **實施及優化幼兒團體能活動**，促進幼兒基礎動作發展，培育幼兒體育素養，邁向全人發展。幼兒透過探索和體驗，導師的指導和練習，掌握基礎動作技能和概念，從小養成積極參與運動的興趣和能力。

家校協作及家長教育

家校協作能加強家長與學校的溝通，也能促進幼兒的學習與成長。了讓家長更了解子女的發展、特質和需要，新學年將舉辦不同講座、工作坊及活動：「品德教育從小開始」、「戲劇教育融入幼兒的學習世界」、「幼兒健體樂、家校齊參與」親子同樂日。



家長活動

親子嶺南之風旅行、親子聖誕嘉年華、親子童夢城通識體驗、親子校內年宵市場、親子製作賀年食品、親子復活節攤位遊戲日、母親節手工藝製作班、親子海洋公園旅行、家長觀課週及家長日。



Parent-School Collaboration and Parent Education

Parent-school collaboration strengthens communication between the School and the parents, and promotes children's growth and learning. To help parents know their children's development, specialties and needs, various talks, workshops and activities will be held: "Moral Education Begins at Young Age", "Integrating Drama into Children's Learning", and "Parent-Child Physical Fitness Gala".



Parent-Child Activities

Trip to Lingnan Park, Christmas Celebration Gala, Experiencing General Studies at Dream Comes True, in-school Chinese New Year Market, Chinese New Year Food Cooking Class, Easter Gala Stalls, Mother's Day Handcraft Class, Trip to Ocean Park, Parent In-Class Observation Week, and Parents' Day.



2016-2017 年度統計 2016-2017 Statistics

1. 活動統計 Activity Statistics

活動名稱 Name of Activity	次數 No. of Times	參與人次 No. of Participants		
		兒童 (Students)	工作人員 (Workers)	家長 (Parents)
生日會 Birthday Party	6	730	100	12
參觀 Visitation	14	470	73	123
節日慶祝會 Ceremonial Party	7	867	95	615
學校旅行 School Picnic	2	126	20	4
家長會 Parental Meeting	4	79	41	300
親子旅行 Parent-Child Picnic	2	230	23	360
開心水果日 Happy Fruit Day	1	122	11	0
新生輔導日 New Student Orientation	2	31	13	63
觀課週 Class Visit	3	94	11	112
音樂週 Music Week	1	124	11	0
畢業聚餐 Graduation Banquet	1	32	7	48
畢業典禮 Graduation Ceremony	1	121	25	432
畢業生福音營 Graduates' Gospel Camp	1	27	6	30
兒童音樂晚會 Children's Music Concert	1	60	6	79

2. 學生年齡分佈 Age Distribution of Students

班別 Class	年齡 Age	學生人數 No. of Students
N	2-3	31
K1	3-4	32
K2	4-5	30
K3	5-6	32

嘉福浸信會幼兒園

Ka Fuk Baptist Church Pre-School

地址：新界粉嶺嘉福邨福樂樓地下

Address: G/F, Fuk Lok House,
Ka Fuk Estate, Fanling, NT

電話 Tel.: 2677 1696

ANNUAL FINANCIAL REPORT


BAPTIST MID-MISSIONS

FOR THE YEAR FROM 1 APRIL 2016 TO 31 MARCH 2017

	<u>NOTES</u>	<u>2016/17</u> HK\$	<u>2015/16</u> HK\$
INCOME			
Lum Sum Grant			
a. Lump sum grant (excluding provident fund)	1a	4,811,125.00	4,380,913.00
b. Provident fund	1b	378,037.00	325,605.00
Fee Income	2	109,019.40	108,544.20
Central Items	3	2,704.00	---
Rent and Rates	4	24,383.00	24,417.00
Other Income	5	206,293.90	257,495.20
Interest Received		39.44	22.91
TOTAL INCOME		<u>5,531,601.74</u>	<u>5,096,997.31</u>
EXPENDITURE			
Personal Emoluments			
a. Salaries	6	4,003,181.34	3,270,597.14
b. Provident Fund	1b	305,533.10	258,110.71
c. Allowances		---	86,000.00
Sub-total		<u>4,308,714.44</u>	<u>3,614,707.85</u>
Other Charges	7	873,878.78	766,246.90
Central Items		---	---
Rent and Rates		<u>18,896.00</u>	<u>17,224.00</u>
TOTAL EXPENDITURE		<u>5,201,489.22</u>	<u>4,398,178.75</u>
SURPLUS FOR THE YEAR		<u>330,112.52</u>	<u>698,818.56</u>

The Annual Financial Report from pages 2 to 8 has been prepared in accordance with the requirements as set out in the Lump Sum Grant Manual.


 Hon Man Kit
 For Managing Director
 Date: 31 August 2017


 King Wai Pan
 Member of Administrative Committee
 Date: 31 August 2017

BAPTIST MID-MISSIONS
NOTES ON THE ANNUAL FINANCIAL REPORT
FOR THE YEAR ENDED 31 MARCH 2017

1. Lump Sum Grant

a) Basis of preparation

The Annual Financial Report (AFR) is prepared on cash basis that is, income is recognised upon receipt of cash and expenditure is recognised when expenses are paid. Non-cash items like depreciation, provisions and accruals are not included in the AFR.

b) Lump Sum Grant (excluding Provident Fund)

This represents Lump Sum Grant (excluding Provident Fund) received for the year.

c) Provident Fund

This is provident fund received and contributed during the year.

Snapshot staff are defined as those staff occupying recognised or holding against subvented posts as at 1 April 2000.

6.8% and other posts represent those staff that are employed after 1 April 2000.

Details are analysed below:

	Snapshot staff HK\$	6.8% Posts and other HK\$	Total HK\$
<u>Provident fund contribution</u>			
Subvention received	113,400.00	264,637.00	378,037.00
Provident fund contribution paid during the year	(113,802.00)	(191,731.10)	(305,533.10)
Surplus for the year	(402.00)	72,905.90	72,503.90
Add: Prior year adjustment	402.00	---	402.00
Surplus b/f	0.00	426,802.91	426,802.91
Surplus c/f	0.00	499,708.81	499,708.81

2. Fee Income

This represents social welfare fee income received for the year in respect of the fees and charges recognised for the purpose of subvention as set out in the LSG Manual.

3. Central Items

These are subvented service activities which are not included in LSG and are subject to their own procedures as set out in other SWD's papers and correspondence with the NGOs. The Provident Fund received and contributed for staff under the Central Items is separately included as part of the income and expenditure of the relevant items. The income and expenditure of the Central Items are as follow:

	<u>2016/17</u> HK\$	<u>2015/16</u> HK\$
a. Subvention		
Time-defined Subsidy Scheme for Extended Hours Service Users	2,704.00	---
b. Expenditure	---	---

BAPTIST MID-MISSIONS
NOTES ON THE ANNUAL FINANCIAL REPPORT
FOR THE YEAR ENDED 31 MARCH 2017

4. Rent and Rates

This represents the amount paid by SWD in respect of premises recognised by SWD. Expenditure on rent and rates in respect of premises not recognised by SWD is not included in AFR.

5. Other Income

This includes programme income and all income other than recognised social welfare fee income received during the year. Non-SWD subventions and donations received are not included as Other Income in AFR.

	<u>2016/17</u> HK\$	<u>2015/16</u> HK\$
(a) Fees and charges for services incidental to the operation of subvented services	206,293.90	257,495.20
(b) Others	---	---
	<u>206,293.90</u>	<u>257,495.20</u>

6. Personal Emoluments

There are one staff member who received personal emoluments more than HK\$500,000 p.a.

	<u>No. of posts</u>	<u>HK\$</u>
<u>Analysis of Personal Emoluments</u>		
HK\$700,001 - HK\$800,000 p.a.	1	750,881.00
HK\$800,001 - HK\$900,000 p.a.	-	-
HK\$900,001 - HK\$1,000,000 p.a.	-	-
HK\$1,000,000 - HK\$1,100,000 p.a.	-	-
HK\$1,100,000 - HK\$1,200,000 p.a.	-	-
> HK\$1,200,000 p.a.	-	-

7. Other Charges

The breakdown on Other Charge is as follows:

	<u>2016/17</u> HK\$	<u>2015/16</u> HK\$
(a) Utilities	38,422.20	38,178.20
(b) Food	0.00	0.00
(c) Administrative Expenses	38,438.10	48,305.00
(d) Stores and Equipment	146,457.03	75,162.80
(e) Repair and Maintenance	73,549.00	13,923.58
(f) Program Expenses	377,588.20	475,379.50
(g) Transportation and Travelling	6,197.00	5,708.20
(h) Insurance	141,635.65	42,168.00
(i) Miscellaneous	51,591.60	67,421.62
	<u>873,878.78</u>	<u>766,246.90</u>

BAPTIST MID-MISSIONS
NOTES TO THE ANNUAL FINANCIAL REPORT
FOR THE YEAR ENDED 31 MARCH 2017

8. ANALYSIS OF RESERVE FUND

	Lump Sum Grant (LSG) HK\$	Special One-Off Grant (SOG) HK\$	Rent and Rates HK\$	Central Items HK\$	Total HK\$
Income					
Lump Sum Grant	5,189,162.00	0.00	0.00	0.00	5,189,162.00
Fee Income	109,019.40	0.00	0.00	0.00	109,019.40
Other Income	206,293.90	0.00	0.00	0.00	206,293.90
Interest Received	39.44	0.00	0.00	0.00	39.44
Rent and Rates	0.00	0.00	24,383.00	0.00	24,383.00
Central Items	0.00	0.00	0.00	2,704.00	2,704.00
Total Income	5,504,514.74	0.00	24,383.00	2,704.00	5,531,601.74
Expenditure					
Personal Emoluments	4,308,714.44	0.00	0.00	0.00	4,308,714.44
Other Charges	873,878.78	0.00	0.00	0.00	873,878.78
Rent and Rates	0.00	0.00	18,896.00	0.00	18,896.00
Central Items	0.00	0.00	0.00	0.00	0.00
Total Expenditure	5,182,593.22	0.00	18,896.00	0.00	5,201,489.22
Surplus for the Year	321,921.52	0.00	5,487.00	2,704.00	330,112.52
Less: (Surplus)/deficit of Provident Fund	(72,503.90)	0.00	0.00	0.00	(72,503.90)
	249,417.62	0.00	5,487.00	2,704.00	257,608.62
Surplus b/f	1,184,677.69	0.00	13,914.00	71,744.00	1,270,335.69
	1,434,095.31	0.00	19,401.00	74,448.00	1,527,944.31
Less: Prior Year Adjustment	(402.00)	0.00	0.00	0.00	(402.00)
Refund to Government	0.00	0.00	(7,661.00)	0.00	(7,661.00)
Surplus c/f	1,433,693.31	0.00	11,740.00	74,448.00	1,519,881.31

Notes:

- Interest received on LSG and PF Reserves, Rent and Rates, Central Items, Special One-off Grant is included as one item under LSG.
- The level of LSG cumulative reserve, being Lump Sum Grant surplus c/f and cumulative interest received c/f, will be capped at 25% of the total of the NGO's operating expenditure (excluding PF expenditure) for the year.

鳴謝

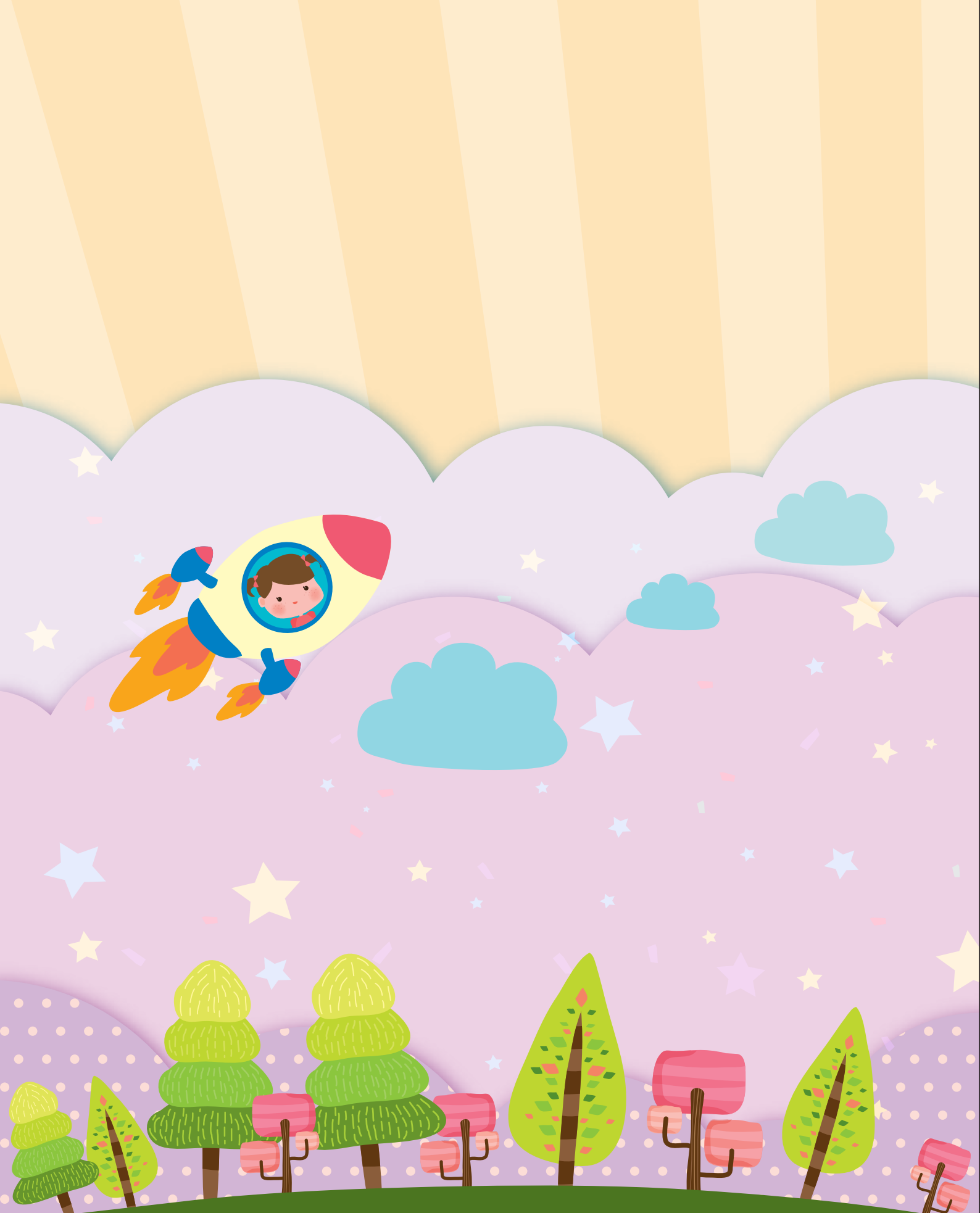
過去一年，本會承蒙下列機構協助，謹此致謝。

社會福利署
教育局
香港公益金
民政事務總署
房屋署
康樂及文化事務署
環境及自然保育基金
屯門區議會
衛生署屯門區長者健康外展隊
香港紅十字會
美中浸信會各堂會

Acknowledgement

We wish to express our gratitude to the following organizations for their assistance in the previous year.

Social Welfare Department
Education Bureau
The Community Chest of Hong Kong
Home Affairs Department
Housing Department
Leisure and Cultural Services Department
Environment and Conservation Fund
Tuen Mun District Council
Tuen Mun District Visiting Health Team, Department of Health
Hong Kong Red Cross
Affiliated Churches of Baptist Mid-Missions



美中浸信會 Baptist Mid-Missions

地址：新界屯門蝴蝶邨蝴蝶灣社區中心地下
Address：G/F, Butterfly Bay Community Centre,
Butterfly Estate, Tuen Mun, NT
電話Tel.：2468 1109 傳真Fax：2453 3497
網站Website：www.bmm.org.hk

承印：小草印刷設計宣傳製品公司 New Verdure Printing & Design

地址：九龍官塘興業街14號永興工業大廈8樓C10室
Address：Factory C10, 8/F Wing Hing Industrial Building,
No. 14 Hing Yip Street, Kwun Tong, Kowloon, HK
電話Tel.：2389 2928 傳真Fax：2344 9685
網站Website：www.newverdure.com